



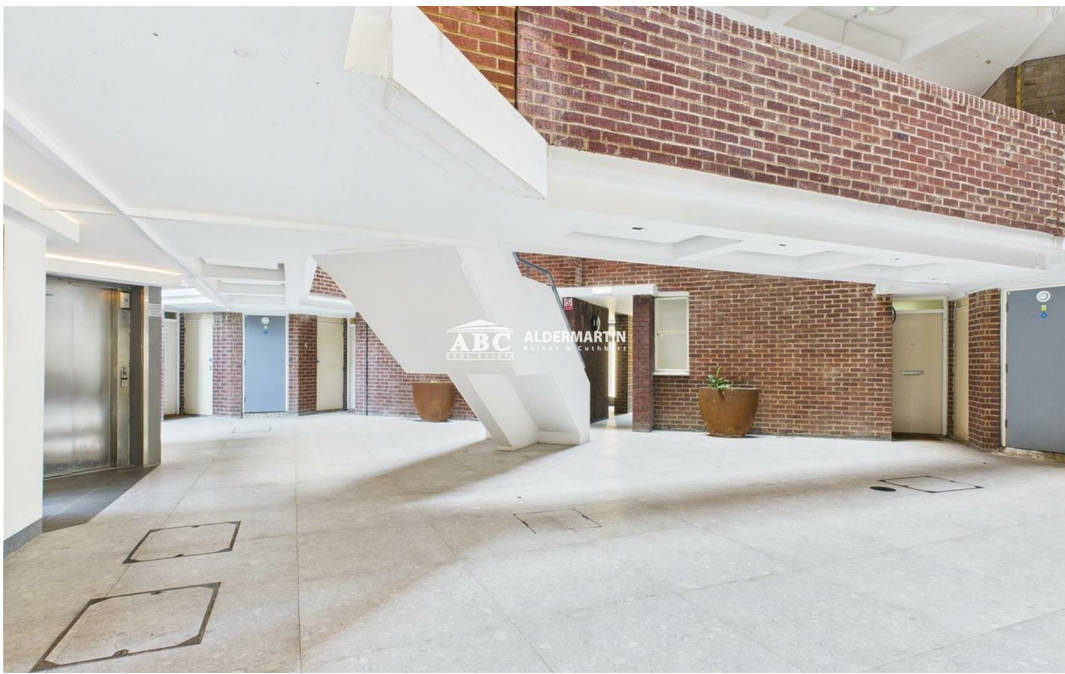
**ABC**  
REAL ESTATE  
**ALDERMARTIN**  
Baines & Cuthbert

**ABC** ALDERMARTIN  
REAL ESTATE Baines & Cuthbert

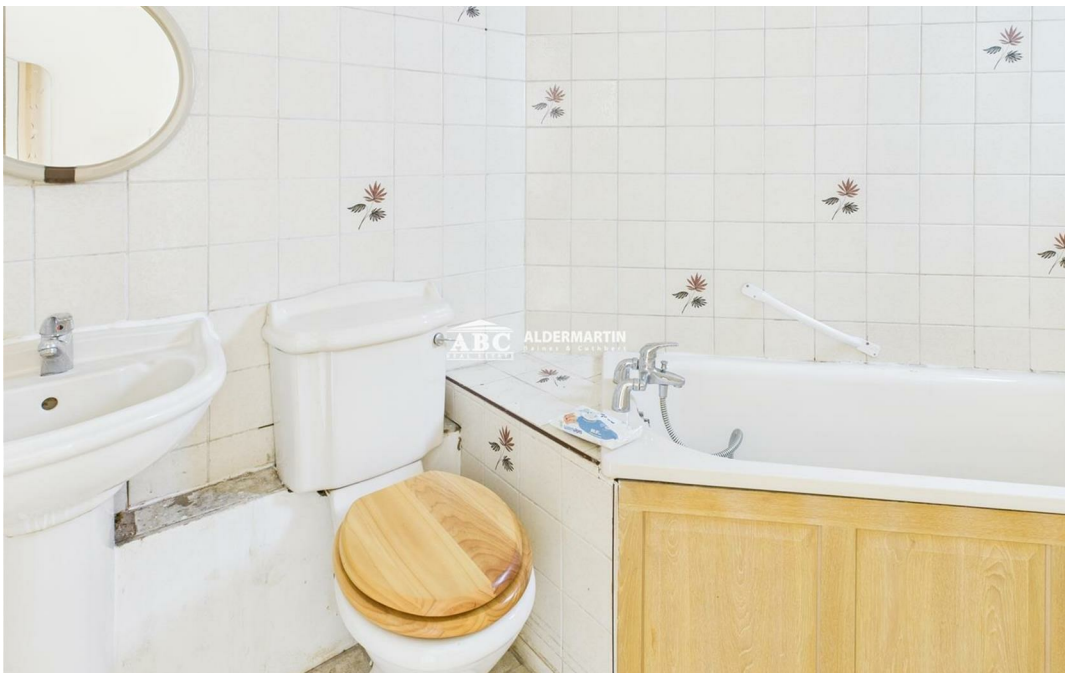
NORMAN COURT

**Nether Street, London N3 1QQ**

**£315,000**  
**Leasehold**







- 1 BEDROOM
- COMMUNAL GARDENS
- COUNCIL TAX BAND C

- SPACIOUS
- GREAT LOCATION
- 24HR CONCIERGE

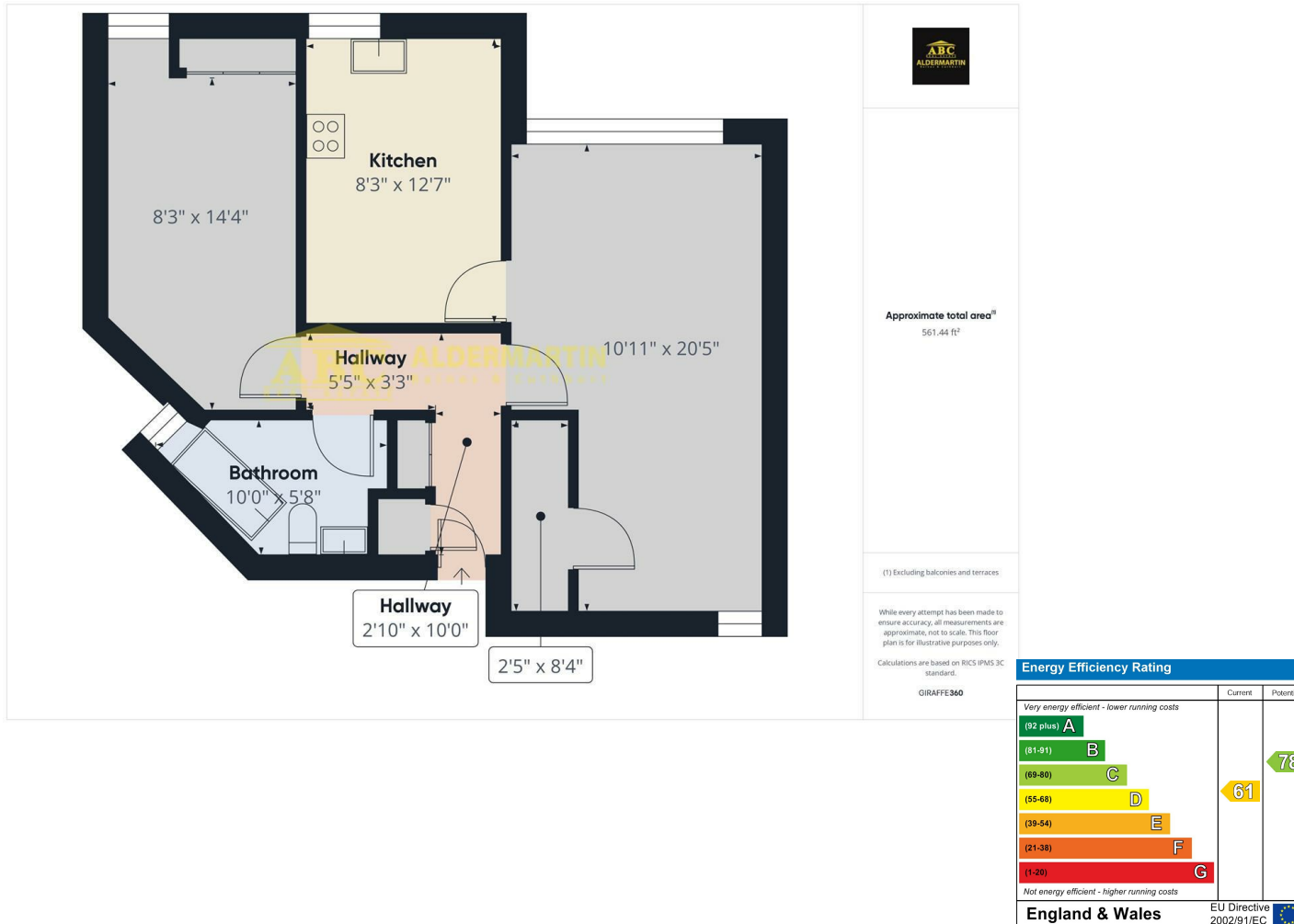
- GATED
- EPC RATING D

A bright and spacious 1 bedroom ground floor apartment situated within the popular Norman Court, N3.

Comprising 1 double bedroom, spacious living room, large separate kitchen, family bathroom and various storage spaces throughout. This property is in need of modernisation, the perfect opportunity for a buyer to put their stamp on the property.

Further benefits include a share of the freehold, 24hr concierge service, gated access, communal gardens and parking.

EPC Rating D  
Council Tax Band C



**INFO@ABCESTATES.CO.UK**  
**0208 203 4567**

